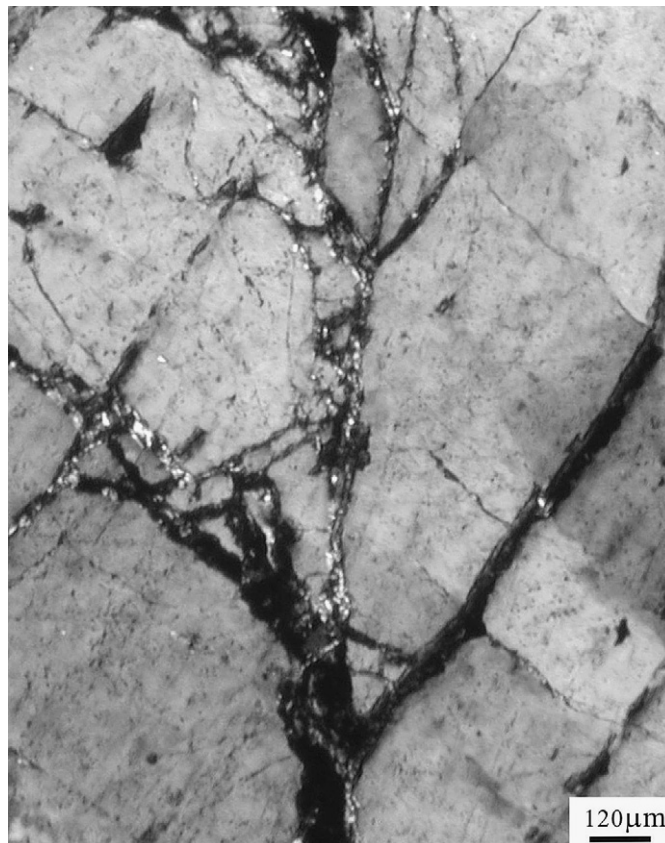




Photograph of the Month

Dendritic microfractures



Fluid-created dendrite microfractures filled by fine mineral aggregates consisting of quartz, chlorite, calcite, and irregular voids in a metasomatic microcline. The branch fractures are symmetrical with respect to the trunk fracture. This fracture pattern is due to the shear stress concentration at the fracture tip (Clemens and Mawer, 1992), and related to hydrofracturing and fluid filling (Cook and Gordon, 1964; Pollard, 1977; Xu et al., 2004).

References

- Clemens, J.D., Mawer, C.K., 1992. Granitic magma transport by fracture propagation. *Tectonophysics* 204, 339–360.
- Cook, J., Gordon, J.E., 1964. A mechanism for the control of crack propagation in all brittle systems. *Proceedings of the Royal Society of London (Series A)* 282, 508–520.

- Pollard, D.D., 1977. Derivation and evaluation of a mechanical model for sheet intrusions. *Tectonophysics* 19, 233–269.
- Xu, X.W., Cai, X.P., Zhang, B.L., Wang, J., 2004. Explosive microfractures induced by K-metasomatism. *Journal of Asian Earth Sciences* 23, 421–423.

Xing-Wang Xu*

Key Laboratory of Mineral Resources, Institute of Geology and Geophysics, Chinese Academy of Sciences, No.19, Beituchengxilu, Chaoyang, P.O. Box 9825, Beijing 100029, PR China

* Tel.: +86 10 82998198; fax: +86 10 6201 0846.

E-mail address: xuxw@mail.igcas.ac.cn

15 May 2007

Available online 30 June 2009